



**NORTHERN GATEWAY
LEISURE PARK**

Colchester

UNIT R1

A development by

TL

TURNSTONE

United Way, Mile End,
Colchester CO4 5UP



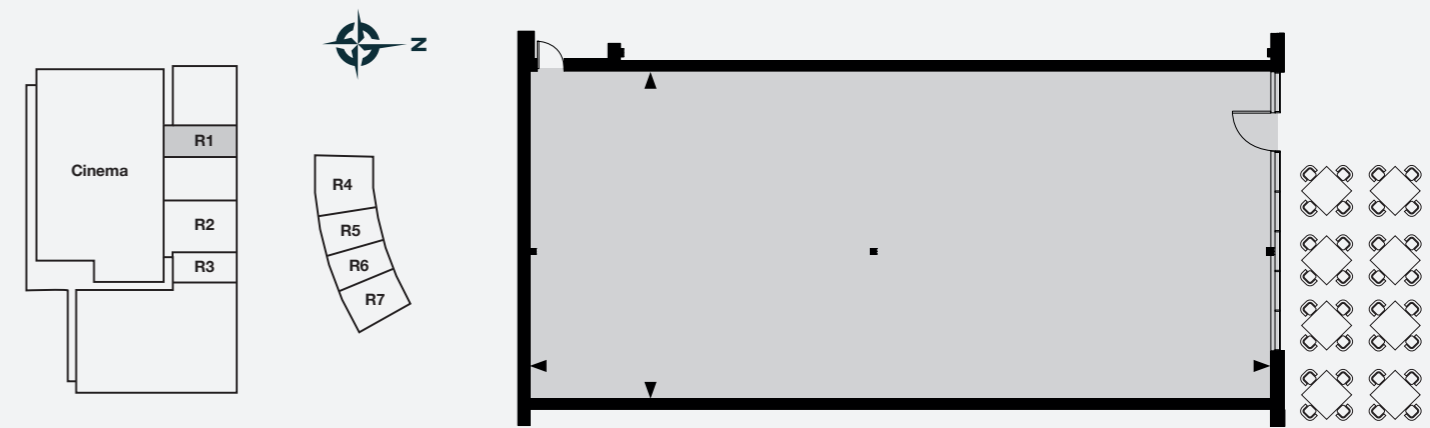
Colchester
City Council



Unit R1

This high quality contemporary urban design A3-A5 restaurant unit is located in a prime position adjacent to the Cineworld entrance and facing the landscaped piazza with provision for substantial outdoor seating. Early access available for restaurant fit out, in time for entire leisure park opening September 2023.

Dimensions / Areas		
Width	12.37m	40'7"
Depth	29.94m	91'8"
Floor Area	346sq m	3724sq ft



Northern Gateway Leisure Park

Introducing Turnstone's prestigious 10-acre scheme, part of Colchester Borough Council's major Northern Gateway sports and recreation facility. Located close to Colchester United's Stadium and a David Lloyd Club, this scheme will deliver 200,000 sq ft of new leisure space, complete with a high-quality landscaped piazza, 750 parking spaces, Fastned rapid charging EV points and impressive green credentials.

Turnstone has already secured an array of leisure and dining pre-lets throughout the site including a Travelodge Hotel, 12-screen Cineworld cinema, Hollywood Bowl, indoor golf Puttstars and Jump Street as well as 7 new restaurants with the likes of Kervan Kitchen, Greggs and Wendy's drive-thru.



Colchester Population 244,700 By 2031



Leisure Park extending to over 200,000sq ft



750 Public parking spaces



Glazed shopfront to restaurant unit



Extensive outdoor restaurant seating

Site Location Map: CO4 5UP



Wareing Partners

Nathan Wareing
 T: 0207 409 0022
 M: 07831 592152
 E: nathan@wareingpartners.com



Whybrow

Ewan Dodds
 T: 01206 577667
 M: 07957 862773
 E: ewan.dodds@whybrow.net

A development by



In partnership



Misrepresentation Act 1967: Wareing & Partners and Whybrow for themselves and for the developers/owners of this property whose agents they are, give notice that 1. These particulars do not constitute, nor constitute any part of, an offer or contract. 2. None of the statements contained in these particulars as to the properties are to be relied on as statements or representations of fact. 3. Any intending tenant must satisfy himself by inspection or otherwise as to the correctness of each of the statements contained in these particulars. 4. The developers/owners do not make or give and neither Wareing and Whybrow nor any person in their employment has any authority to make or give, any representation or warranty whatever in relation to this property. Property Misdescriptions Act 1991: These details are believed to be correct at the time of compilation but may be subject to subsequent amendment. Compiled February 2022.