



5C Enterprise Court, Lakes Road, Braintree, CM7 3QS



- Gross Area – 8,285 sq. ft (769 sq. m)
- Large Industrial Complex
- Secure loading yard
- Ample parking
- Concertina Loading Door (7.1m x 9m)
- Eaves height of 8.3m

Accommodation

According to our calculations, the unit has the following Gross internal areas:

Unit 5C

Ground Floor

4,463 sq. ft

Mezzanine

3,822 sq. ft

GROSS INTERNAL AREA

8,285 sq. ft (769 sq. m)



Location

Braintree is a growing market town with a population of around 45,000. The town enjoys excellent transport links via the busy A120 some 15 miles west of Colchester, 15 miles east of Stansted Airport/M11 and north of Chelmsford via the A131. The town has direct rail links into London Liverpool Street with a journey time of around 1 hour.

Enterprise Court, situated just off Lakes Road, the main access route between the town centre and the Freeport Designer Outlet Village which links to the A120 is one of the town's main employment areas containing a range of industrial and office occupiers including Royal Mail, Wickes, Halfords, Travis Perkins and Screwfix.

Description

The unit is located on a complex of industrial/office buildings set within a secure site with a large loading yard to the rear.

The unit is of steel frame construction with full height brick elevations beneath a pitched, metal sheet roof with translucent roof lights. The unit is over ground and full mezzanine levels and benefits from a roller shutter (4.6m x 4.6m) and concertina loading door (7.1m x 9m), eaves height of 8.3m (13.3m to ridge) and air conditioning throughout.

Access into the site is via a secure barrier leading to a large secure yard to the rear via a driveway.





Town Planning

The unit is situated in an established employment area and is understood to benefit from an established Industrial/Warehouse use. Interested parties are advised to contact Braintree Council on 01376 552525.

Rateable Value

The units appear in the Valuation List with the following Rateable Values:
5C/D Warehouse and Premises: £74,500

Services

The unit's services include electric, mains water and sewage.

Asking Terms

Freehold and Leasehold. The unit is available to purchase Freehold at an asking price of £1,050,000 (One Million and Fifty Thousand Pounds) or Leasehold by way of a new FRI lease to be agreed at an asking rent of £78,000pax.

VAT

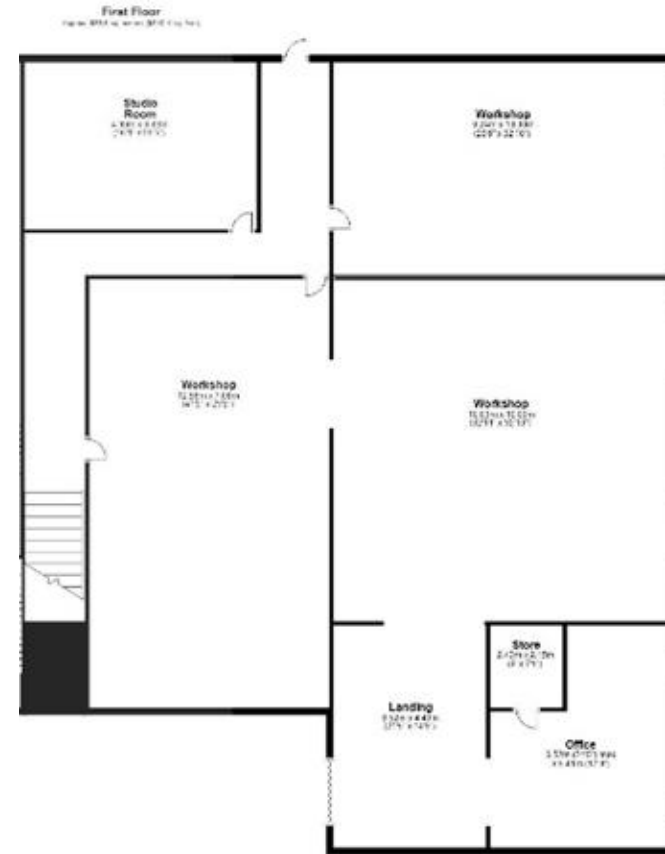
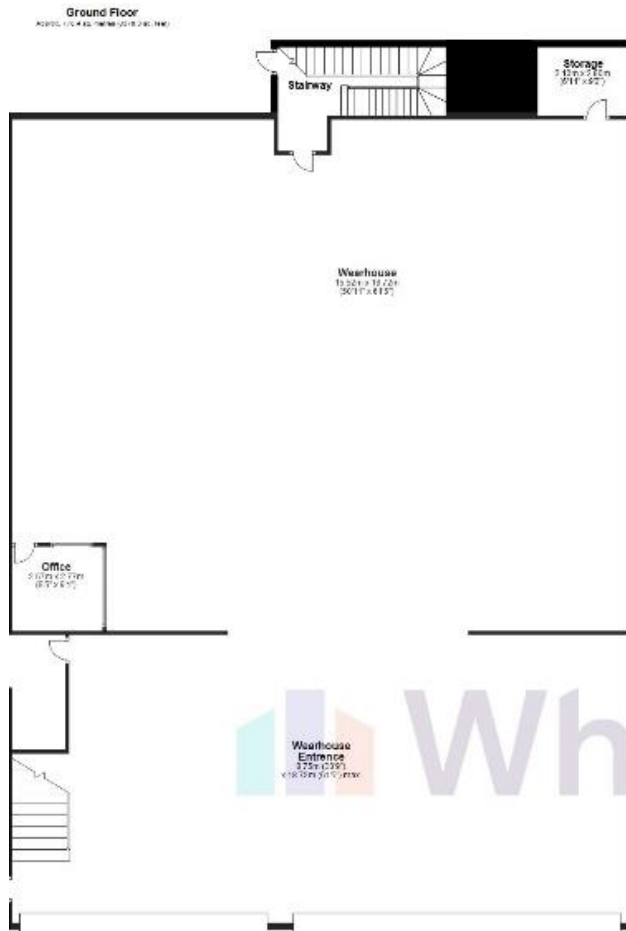
The property is elected for VAT.

Legal Fees

Each party is to bear their own legal costs throughout the course of any transaction.







Ewan Dodds BSc FRICS
 ewan.dodds@whybrow.net
 01206 577667



Maria Newman
 m.newman@whybrow.net
 01206 577667



Charntelle Goodyear
 Charntelle.goodyear@whybrow.net
 01206 577667